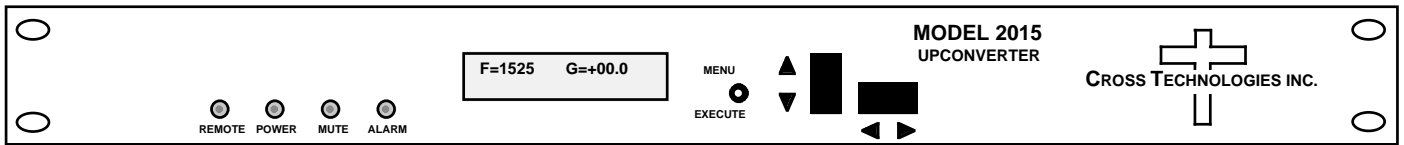


# Instruction Manual

# Model 2015-02 Upconverter

September 2009 Rev. K



Data, drawings, and other material contained herein are proprietary to Cross Technologies, Inc., but may be reproduced or duplicated without the prior permission of Cross Technologies, Inc. for purposes of operating the equipment. Printed in USA.

When ordering parts from Cross Technologies, Inc., be sure to include the equipment model number, equipment serial number, and a description of the part.



6170 Shiloh Road  
Alpharetta, Georgia 30005

(770) 886-8005  
FAX (770) 886-7964  
Toll Free 888-900-5588

WEB [www.crosstechnologies.com](http://www.crosstechnologies.com)  
E-MAIL [info@crosstechnologies.com](mailto:info@crosstechnologies.com)

# INSTRUCTION MANUAL

## MODEL 2015-02 Upconverter

<u>TABLE OF CONTENTS</u>	<u>PAGE</u>
Warranty	2
1.0 General	3
1.1 Equipment Description	3
1.2 Technical Characteristics	4
1.3 Monitor & Control Interface	5
1.4 Environmental Use Information	8
2.0 Installation	9
2.1 Mechanical	9
2.2 Rear I/O's	10
2.3 Front Panel Controls, Indicators	11
2.4 Operation	12
2.5 Menu Settings	13
3.0 Ethernet Interface	18
3.1 Connection	18
3.2 Ethernet Configuration	18
3.3 Webpage M&C	19
3.4 SNMP Configuration	20

**WARRANTY** - The following warranty applies to all Cross Technologies, Inc. products.

All Cross Technologies, Inc. products are warranted against defective materials and workmanship for a period of one year after shipment to customer. Cross Technologies, Inc.'s obligation under this warranty is limited to repairing or, at Cross Technologies, Inc.'s option, replacing parts, subassemblies, or entire assemblies. Cross Technologies, Inc. shall not be liable for any special, indirect, or consequential damages. This warranty does not cover parts or equipment which have been subject to misuse, negligence, or accident by the customer during use. All shipping costs for warranty repairs will be prepaid by the customer. There are not other warranties, express or implied, except as stated herein.



6170 Shiloh Road  
Alpharetta, Georgia 30005

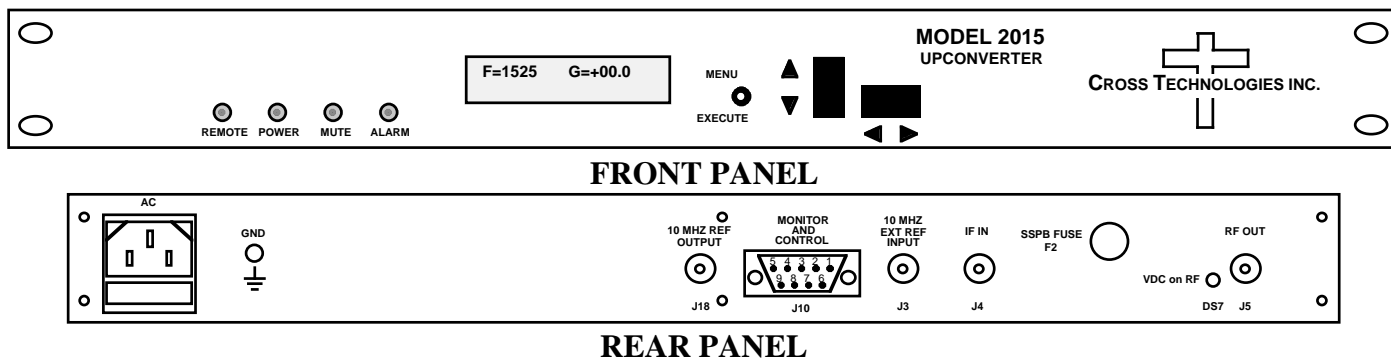
WEB [www.crosstechnologies.com](http://www.crosstechnologies.com)  
E-MAIL [info@crosstechnologies.com](mailto:info@crosstechnologies.com)

# MODEL 2015-02 Upconverter

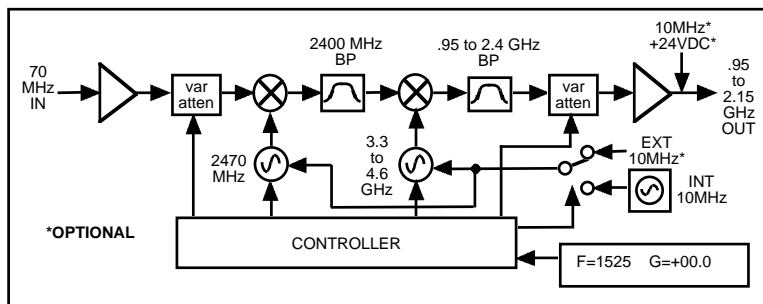
## 1.0 General

### 1.1 Equipment Description

The 2015-02 L-band Upconverter converts  $70 \pm 18$  MHz to 950 to 2150 MHz in 1 MHz steps with low group delay and flat frequency response. Synthesized local oscillators (LO) provide frequency selection. Multi-function push button switches select the RF frequency, gain, and other parameters. Front panel LEDs provide indication of DC power (green), PLL alarm (red), Remote operation (yellow) or the TX carrier is Muted (yellow). Variable attenuators for the IF input and output provide a gain range of -10 to +30 dB as adjusted by the front panel multi-function pushbutton switches. Remote operation allows selection of frequency and gain. Parameter selection and frequency and gain settings appear on the LCD display. Connectors are BNC female for the IF input and the optional external 10 MHz reference input and output (option -E), and type F for the RF output. Table 2.2 shows other connector options. The 10 MHz option includes a 10 MHz output connector which contains either the internal or external 10 MHz reference signal. SSPB +24 VDC (option -V) and 10 MHz reference (option -E) can be inserted on the RF lines. The 2015-02 is powered by a 100-240  $\pm 10\%$  VAC power supply and is contained in a 1 3/4" X 19" X 16" rack mount chassis.



**FIGURE 1.1 Model 2015-02 Front and Rear Panels**



**FIGURE 1.2 Model 2015-02 Upconverter Block Diagram**

## 1.2 Technical Characteristics

**TABLE 1.0 2015-02 Upconverter Specifications\***

### Input Characteristics

Impedance/Return Loss	75 Ω /18 dB (see TABLE 2.2 for connector options)
Frequency	70 ± 18 MHz
Input Level	-40 to -10 dBm

### Output Characteristics

Impedance/Return Loss	75 Ω/12 dB (see TABLE 2.2 for connector options)
Frequency	950 to 2150 MHz
Output level	0 to -20 dBm
Output level/1 dB	+5 dBm

### Channel Characteristics

Gain range (adjustable)	-10 to +30.0 dB
Spurious Response	<-50 dBC, with input level set correctly
Frequency Response	±1.5 dB, 950 -2150 MHz; ± 0.5 dB, 36 MHz BW
Group Delay, max.	0.01 ns/MHz <sup>2</sup> parabolic; 0.03 ns/MHz linear; 1 ns ripple
Frequency Sense	Non-inverting

### Synthesizer Characteristics

Frequency Accuracy	± 1.0 ppm max. over temp (± 0.01 ppm option -H) internal reference
Frequency Step	1.0 MHz minimum

Phase Noise @ Freq	100 Hz	1kHz	10kHz	100kHz	1MHz
dBC/Hz	-70	-70	-80	-90	-100

10 MHz level (In & Out) 3 dBm, ± 3 dB, 75 ohms (**option E**)

### Controls, Indicators

Frequency Selection	direct readout LCD; pushbutton switches or remote selection
Gain Selection	direct readout LCD; pushbutton switches or remote selection
Power	Green LED
Alarm	Red LED
Remote	Yellow LED; RS232C (RS485, <b>option -Q</b> ), 9600 baud (Ethernet M&C Remote Interface, <b>option-W8</b> )
Mute	Yellow LED

### Other

RF Connector	Type F (female) (see TABLE 2.2 for other options)
IF Connector	BNC (female) (see TABLE 2.2 for other options)
10 MHz Conn. (In/Out)	BNC (female) ( <b>option -E</b> )
Alarm/Remote Connector	DB9 - NO or NC contact closure on Alarm
Size	19 inch, 1RU standard chassis 1.75" high X 16.0" deep
Power	100-240 ±10% VAC, 47-63 Hz, 45 watts max.

### Options

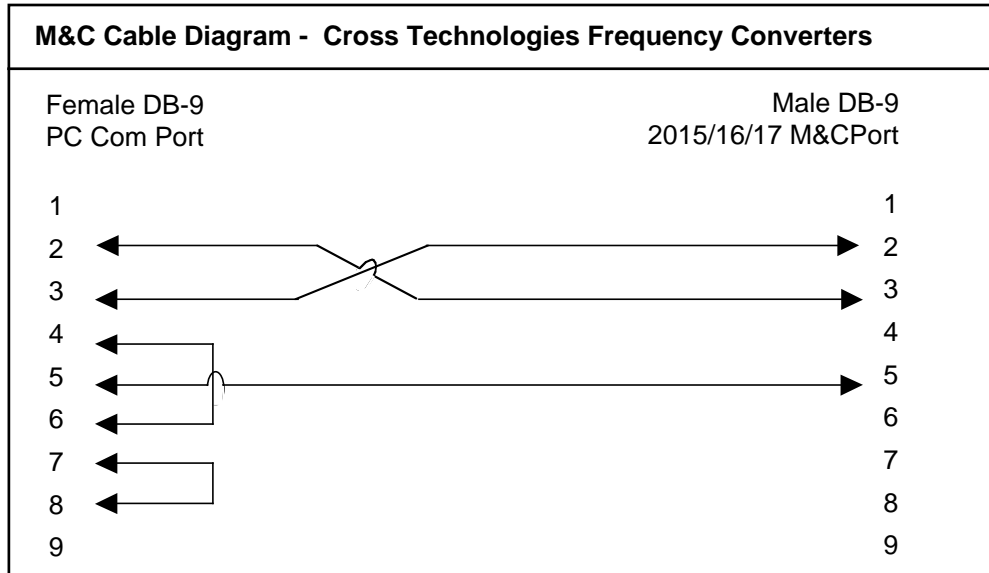
-E	Allows ext. 10 MHz ref input, 10 MHz ref can be inserted on the RF in
-H	High Stability (± 0.01 ppm) internal reference
-Q	RS-422/RS-485 Remote capability
-T	Temperature Sensor
-V	SSPB +24 VDC, 2.5 Amps max., with readout of current
-X	125 kHz step size
-W8	Ethernet M&C Remote Interface
-Z	Attenuator 0.1 dB step size
Connector options	see TABLE 2.2

\*+10°C to +40°C; Specifications subject to change without notice

### 1.3 Monitor and Control Interface

#### A) Remote serial interface

**Protocol:** RS-232C, 9600 baud rate, no parity, 8 data bits, 1 start bit, and 1 stop bit.  
(RS-232C, RS-422, or **RS-485 - option -Q**)



**Connector:** Rear panel, DB-9 male

<b>J10 Pinouts (RS-232C/422/485)</b>	
Pin	Function
1	Rx-
2	Rx+ (RS-232C)
3	Tx+ (RS-232C)
4	Tx-
5	GND
6	Alarm Relay: Common
7	Alarm Relay: Normally Open
8	Not Used
9	Alarm Relay: Normally Closed

## **B) Status Requests -**

Table 1.1 lists the status requests for the 2015-02 and briefly describes them.

\* PLEASE NOTE: The two character {aa}(00-31) prefix, in the table below, should be used ONLY when RS-485, (OPTION-Q), is selected.

<b>TABLE 1.1 2015-02 Status Requests</b>		
<b>Command</b>	<b>Syntax *</b>	<b>Description</b>
Command Status	{aaS1}	Returns {aaS1bbbbccddAM} where:
		• bbbb = Tx frequency
		4 characters - standard (7 characters - Option-X)
		• ccc = Tx gain
		• dd = Tx input level (10 to 40 => -10 to -40 dBm)
		• A = 0 - summary alarm
		• M = Tx RF Status (1 = Normal, 0 = Muted)
10 MHz Reference Status	{aaS2}	Returns {aaS2ER} where:
(option -E only)		• E = Ext 10MHz Status (1 = on, 0 = off)
		• R = 10MHz RF insertion status (1 = inserted, 0 = NOT inserted)
SSPB Current	{aaS4}	Returns {aaS4bbb} where:
(option -V only)		• bbb = SSPB current, range 000 to 250 (0 to 2500 mA)

## C) Commands

Table 1.2 lists the commands for the 2015-02 and briefly describes them. After a command is sent the 2015-02 sends a return “>” indicating the command has been received and executed.

**General Command Format** - The general command format is {CND...}, where:

- { = start byte
- C = 1 character, either C (command) or S (status)
- N = 1 character command or status request
- D = 1 character or more of data (depends on command)
- } = stop byte

\* PLEASE NOTE: The two character {aa}(00-31) prefix, in the table below, should be used ONLY when RS-485, (OPTION-Q), is selected.

Table 1.2 2015-02 Commands		
Command	Syntax*	Description
Set Transmitter Frequency	{aaC1xxxx}	where:
		• xxxx = 4 characters standard (7 characters -Option-X)
		• Range: 0950 to 2150 MHz, in 1 MHz steps
		0950.000 to 2150.000 in 1 kHz steps (option-X)
Set Input Level	{aaC1xx}	where:
		• xx = 2 characters
		• Range: 10 to 40 (-10 to -40 dBm, in 1 dB steps)
Set Transmit Gain	{aaC3xxx}	where:
		• xxx = 2 characters (0 to 30dB), 3 characters (-10 to -1dB)
		• Range: -10 to 30 (-10 dB to +30 dB, in 1 dB steps)
Enable 10MHz RF Insertion (option -E only)	{aaC5x}	where x =:
		• 0 to disable 10MHz RF insertion
		• 1 to enable 10MHz RF insertion
Enable Tx	{aaCAx}	where x =:
		• 0 to disable Tx signal
		• 1 to enable Tx signal
Enable External 10MHz (option -E only)	{aaCEx}	where x =:
		• 0 to disable External 10MHz ref signal
		• 1 to enable External 10MHz ref signal
Enable Remote	#	Just # sign
Disable Remote	{aaCRO}	{CR and zero}

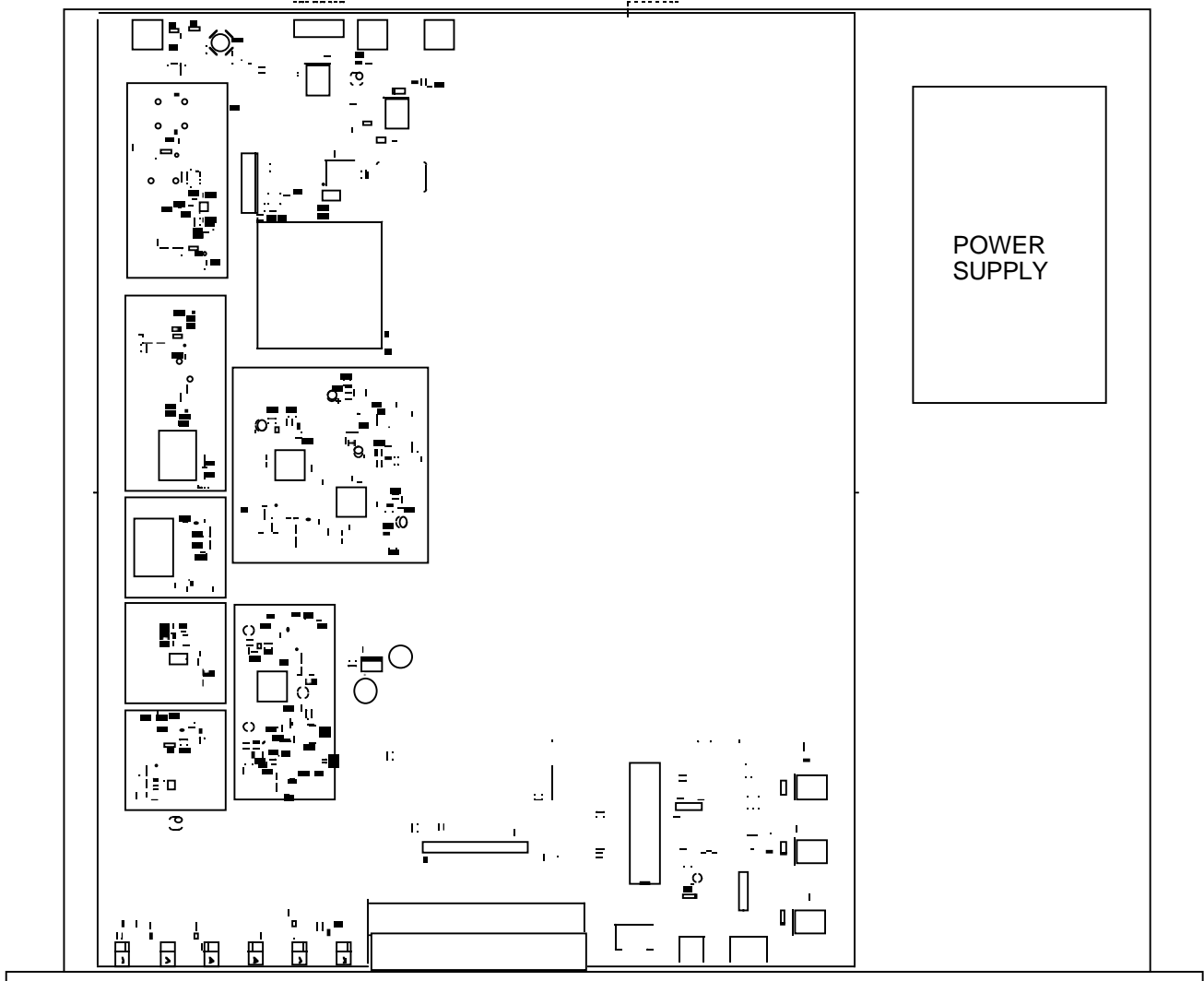
## 1.4 Use Information

- A. Rack-Mounting** - To mount this equipment in a rack, please refer to the installation instructions located in the user manual furnished by the manufacturer of your equipment rack.
- B. Mechanical loading** - Mounting of equipment in a rack should be such that a hazardous condition does not exist due to uneven weight distribution.
- C. Elevated operating ambient temperature** - If installed in a closed or multi-unit rack assembly, the operating ambient temperature of the rack may be greater than room ambient temperature. Therefore, consideration should be given to Tmra.
- D. Reduced air flow** - Installation of the equipment in a rack should be such that the amount of air flow required for safe operation of the equipment is not compromised. Additional space between unit may be required.
- E. Circuit Overloading** - Consideration should be given to the connection of the equipment to the supply circuit and the effect that overloading of circuits could have on over current protection and supply wiring. Appropriate consideration of equipment name plate rating should be used, when addressing this concern.
- F. Reliable Earthing** - Reliable earthing of rack-mounted equipment should be maintained. Particular attention should be given to supply connections other than direct connection to the Branch (use of power strips).
- G. Top Cover** - There are no serviceable parts inside the product so, the Top Cover should not be removed. If the Top Cover is removed the ground strap and associated screw **MUST BE REINSTALLED** prior to Top Cover screw replacement. **FAILURE TO DO** this may cause **INGRESS** and/or **EGRESS** emission problems.

## 2.0 Installation

### 2.1 Mechanical

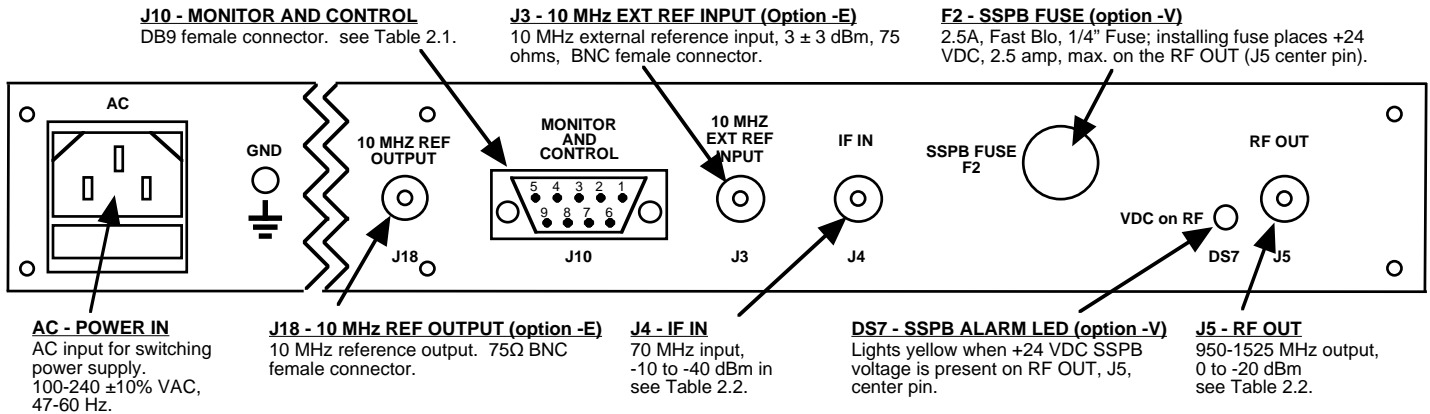
The 2015-02 consists of one RF/Controller PCB housed in a 1 RU (1 3/4 inch high) by 16 inch deep chassis. A switching,  $\pm 12$ , +24, +5 VDC power supply provides power for the assemblies. The 2015-02 can be secured to a rack using the 4 holes on the front panel. Figure 2.0 shows how the 2015-02 is assembled.



**FIGURE 2.0 2015-02 Mechanical Assembly**

## 2.2 Rear Panel Input/Output Signals

Figure 2.1 shows the input and output connectors on the rear panel.



**FIGURE 2.1 2015-02 Rear Panel I/O's**

Pin	Function
1	Rx-
2	Rx+ (RS-232C)
3	Tx+ (RS-232C)
4	Tx-
5	GND
6	Alarm Relay: Common
7	Alarm Relay: Normally Open
8	Not Used
9	Alarm Relay: Normally Closed

### \*Remote Serial Interface

Interface: DB-9 Male

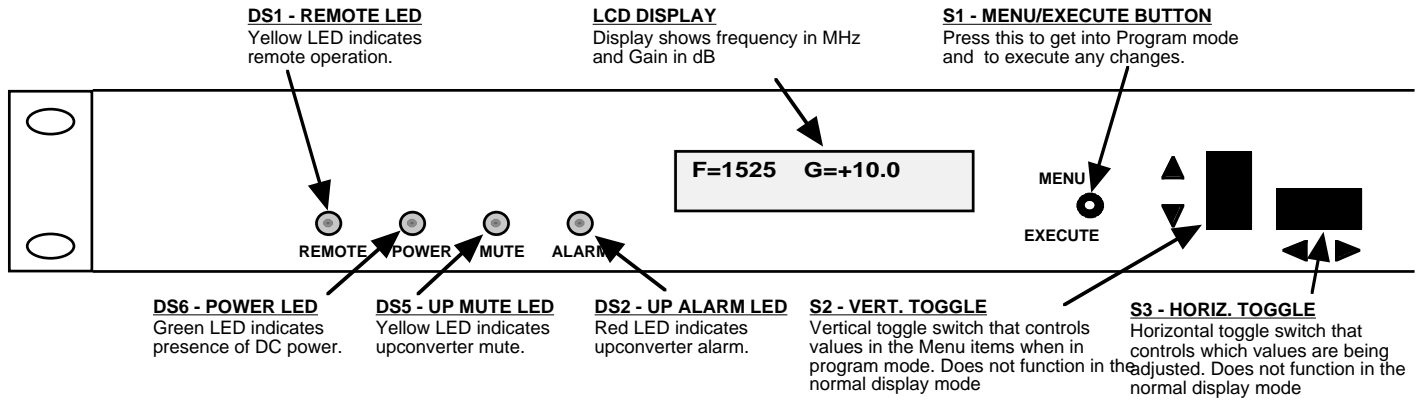
Protocol: RS-232C (RS-232C/422/485 **option -Q**),

9600 baud rate, no parity, 8 data bits, 1 start bit, 1 stop bit.

Option	IF	RF
STD	BNC, 75 $\Omega$	Type F, 75 $\Omega$
B	BNC, 75 $\Omega$	BNC, 75 $\Omega$
C	BNC, 75 $\Omega$	BNC, 50 $\Omega$
N	BNC, 75 $\Omega$	Type N, 50 $\Omega$
D	BNC, 50 $\Omega$	BNC, 50 $\Omega$
M	BNC, 50 $\Omega$	Type N, 50 $\Omega$
S	BNC, 50 $\Omega$	SMA, 50 $\Omega$
F	Type F, 75 $\Omega$	Type F, 75 $\Omega$
FN	Type F, 75 $\Omega$	Type N, 50 $\Omega$

## 2.3 Front Panel Controls and Indicators

Figure 2.2 shows the front panel controls and indicators.

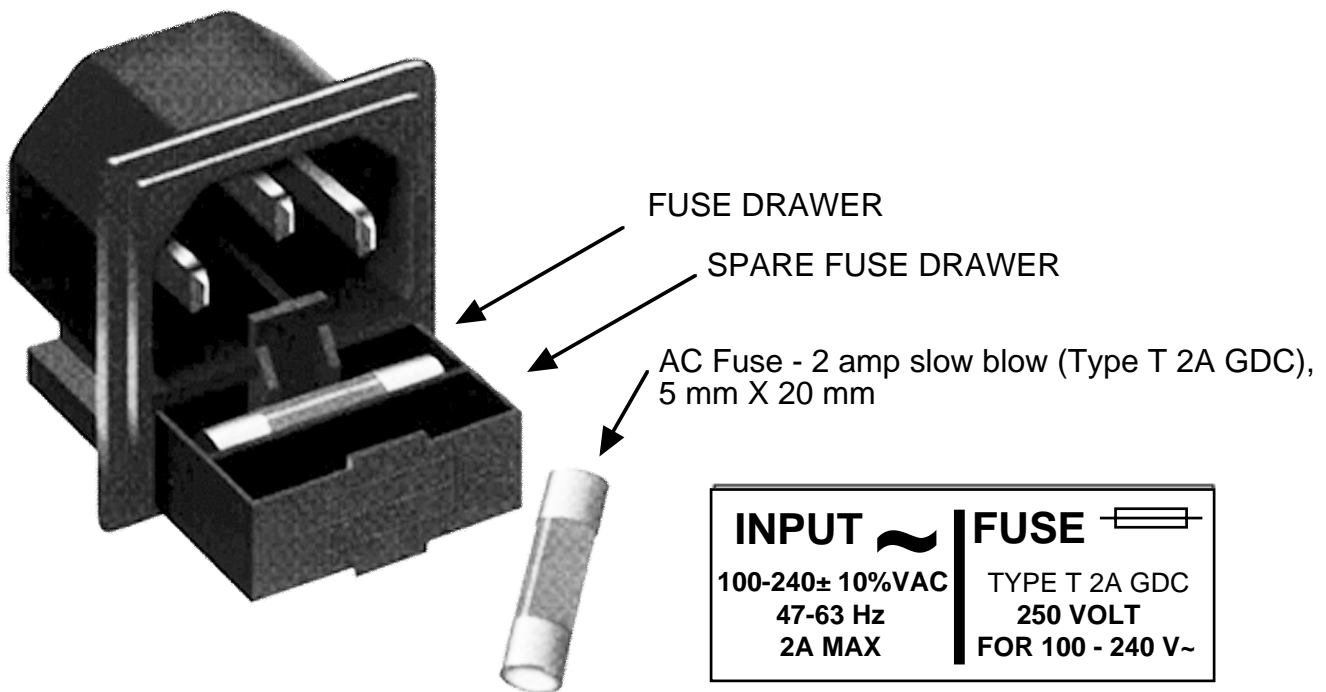


**FIGURE 2.2 2015-02 Front Panel Controls and Indicators**

## 2.4 Installation / Operation

### 2.4.1 Installing and Operating the 2015-02, Upconverter Section

1. Connect a -10 dBm to -40 dBm signal to IF In, J4 (Figure 2.1)
2. Connect the RF OUT, J5, to the external equipment
3. Connect 100-240  $\pm$ 10% VAC, 47 - 63 Hz to AC1 on the back panel.
4. Set the desired output frequency (See Section 2.5 Menu Settings).
5. Set the input level (See Section 2.5 Menu Settings).
6. Set the gain for -10 to +30 dB. Make sure the output stays within -20 to 0 dBm with the gain selected and the input level provided. The firmware will prevent setting gain and input level outside this range. (See Section 2.5 Menu Settings).
7. Be sure DS6 (green, DC Power) is on and DS2 (red, Alarm) is off (Figure 2.2).
8. Option -V only - To insert SSPB +24 VDC on the RF center pin install 2.5A fast blo fuse in F2 and check that DS7 lights yellow (Figure 2.1)
9. AC Fuse - The fuse is a 5 mm X 20 mm, 2 amp slow blow (Type T) and is inserted in the far slot in the drawer below the AC input as shown in Figure 2.3. There is a spare fuse in the near slot. If a fuse continues to open, the power supply is most likely defective.



**FIGURE 2.3 Fuse Location and Spare Fuse**

## 2.5 Menu Settings

### 2.5.1 Functions

This section describes operation of the front panel controls. There are three operator switches, the LCD display and alarm indicator LEDs. All functions for the equipment are controlled by these components. The functions are (see Figure 2.4):

#### **Power Up**

#### **Normal Display**

**Menu 1** Frequency in MHz

**Menu 2** Input Level (Set from -40 to -10)

**Menu 3** Gain (-10 to +30, 1dB steps (0.1dB steps, option -Z))

**Menu 4** Up Mute

**Menu 5** Set Unit to Remote Operation

**Menu 6** Select External 10 MHz Ref (option -E)

**Menu 7** Select 10 MHz Reference RF insertion (option -E)

**Menu 8** Set Remote mode (option -Q)

**Menu 9** Set RS-485 address (option -Q)

**Menu 10** View PCB Temperature (option -T)

**Menu 11** View SSPB Current (option -V)

**Save Menu** When “R” is selected in any above menu, or when the end is reached (after Menu 11)

Alarm indications appear on the LEDs (see Figure 2.2).

All program changes must start with the operation of the Menu/Execute switch and must also end with the operation of the Menu/Execute switch verified by the “Save Settings?” Menu. If this sequence is not followed, none of the changes will take effect. If programming is initiated and no operator action takes place for approximately 12 seconds (before the final press of the Menu/Execute switch) the display will revert to its previous status and you will need to start over.

### 2.5.2. Power On Settings

**NOTE: THE LAST STATUS OF A UNIT IS RETAINED EVEN WHEN POWER IS REMOVED. WHEN POWER IS RESTORED, THE UNIT WILL RETURN TO IT'S PREVIOUS SETTINGS.**

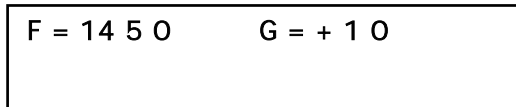
When power is first applied, the LCD display goes through three steps.

1. The LCD goes black to show all segments are functioning.
2. The software version will be displayed.



REV 1.00

3. The present frequency and gain of the upconverter is shown.



F = 1450      G = +10

The unit is now operational and ready for any changes the operator may desire.

### 2.5.3 Control Switches

1. Menu/Execute - Any change to the programming of the unit must be initiated by pressing the Menu/Execute switch and completed by pressing the Menu/Execute switch.
2. Horizontal Switch - This switch is mounted so its movement is horizontal and moves the cursor left or right.
3. Vertical Switch - This switch is mounted so its movement is vertical and has two functions:
  - a. During frequency, gain changes, the vertical movement will raise or lower the number in the direction of the arrows.
  - b. For other functions such Mute on/off, the vertical switch will alternately turn the function on or off regardless of the direction operated.

## 2.5.4 Frequency Changes

At any time during the modification process, if you have made a mistake and do not wish to save the changes you have made, **do not press the Menu/Execute switch**; simply do nothing for approximately 12 seconds, and the system will return to the normal operating mode or scroll to “**R**” and push the Menu/Execute switch and select “**NO**” in the “**SAVE SETTINGS?**” window.

To change the FREQUENCY:

Operate the Menu/Execute switch until you get to the menu item you want to change see Figure 2.4 for the sequence of menu options. The following display is for changing the upconverter frequency:

```
FREQ = 1 4 5 0      R
```

Pressing the Up/Down switch down will toggle the display to:

```
FREQ = 1 3 5 0      R
```

By using the horizontal rocker switch the cursor can be moved left or right .

```
FREQ = 1 3 5 0      R
```

**NOTE: CHANGES DO NOT TAKE PLACE ON FREQUENCY UNTIL YOU GO TO THE SAVE MENU AND INDICATE YOU WANT TO SAVE THE CHANGES. THE CARRIER IS MUTED WHEN FREQUENCY IS CHANGED.**

When the display indicates the value desired you can push the Menu/Execute switch to the next item:

```
UP IN LVL = - 2 0      R
```

OR you can scroll to “R”, push the Menu/Execute switch to get to:

```
SAVE SETTINGS? Y N
```

Selecting **Y** will save the new settings. Selecting **N** will revert to the previous settings.

Pushing the Menu/Execute switch then takes you to the :

```
F = 13 5 0      G = + 1 0
```

Figure 2.4 gives the menu items and how to make changes

## 2.5.5 Gain Changes

When you get to this menu note that the gain changes will be made as you make them but if you do not wish to save the changes you have made, scroll to “R” and push the menu/Execute switch and select “NO” in the “SAVE SETTINGS?” window or **do not press the Menu/Execute switch**; simply do nothing for approximately 12 seconds, and the system will return to the normal operating mode.

The following display is for changing the upconverter input level. This is an important setting to optimize spurious and should be made as accurately as possible:

```
UP IN LVL = - 2 0      R
```

**NOTE: CHANGES TAKE PLACE ON LEVEL AND GAIN IMMEDIATELY BUT DO NOT GET SAVED UNTIL YOU GO TO THE SAVE MENU AND INDICATE YOU WANT TO SAVE THE CHANGES.**

Press the Up/Down switch to change the level in 1 dB steps and then push the Menu/Execute switch to get to the Gain setting:

```
G A I N = + 2 0      R
```

Pressing the Up/Down switch to change the gain in 1 or 10 dB steps and then push the Menu/Execute switch to get to the Gain setting:

```
G A I N = + 2 0      R
```

By using the horizontal rocker switch the cursor can be moved left or right .

Pressing the Up/Down switch down will toggle the display digit selected until you have the desired gain.

**NOTE: THE GAIN WILL BE CHANGED AS YOU ADJUST THE NUMBERS. HOWEVER, THE VALUE WILL NOT BE STORED UNTIL YOU INDICATE YES IN THE SAVE SETTINGS WINDOW. DO NOT SET A GAIN THAT WOULD EXCEED 0 dBm OR HAVE LESS THAN -20 dBm OUTPUT LEVEL. THE FIRMWARE PREVENTS YOU FROM THIS.**

When the display indicates the value desired you can push the Menu/Execute switch to the next item OR you can scroll to “R”, push the Menu/Execute switch to get to:

```
S A V E S E T T I N G S ?  Y N
```

Selecting Y will save the new settings. Selecting N will revert to the previous settings.

Pushing the Menu/Execute switch then takes you to the :

```
F = 13 5 0      G = + 2 0
```

Figure 2.4 gives the menu items and how to make changes

## 2.5.5 Alarm Indications

An alarm condition will occur if any local oscillator phase lock loop (PLL) comes out of lock. The Mute LED will light if you select Mute and the Remote LED will light when you select the Remote mode.

<b>Power Up</b>	ON POWER UP		REV 1.00		
<b>Normal Display</b>	NORMAL DISPLAY		F = 1450    G = +10.0		PUSH BUTTON
<b>Menu 1</b> Frequency	PUSHING MENU/EXECUTE SEQUENCE		F = 1450    R	SCROLL <> SCROLL ⏪	PUSH BUTTON
<b>Menu 2</b> Input Level (Set from -40 to -10)			UP INLVL = -20    R	SCROLL <> SCROLL ⏪	PUSH BUTTON
<b>Menu 3</b> Gain (-10.0 to +30.0)			G = +10.0    R	SCROLL <> SCROLL ⏪	PUSH BUTTON
<b>Menu 4</b> Up Mute			UP MUTE    OFF    R	SCROLL <> SCROLL ⏪	PUSH BUTTON
<b>Menu 5</b> Set Unit to Remote Operation			REMOTE    OFF    R	SCROLL <> SCROLL ⏪	PUSH BUTTON
<b>Menu 6</b> Select External 10 MHz Reference (option -E)			EXT REF    OFF    R	SCROLL <> SCROLL ⏪	PUSH BUTTON
<b>Menu 7</b> Select 10MHz Reference Out (option -E)			REF OUT    OFF    R	SCROLL <> SCROLL ⏪	PUSH BUTTON
<b>Menu 8</b> Set Remote Mode (option -Q)			RS 485    OFF    R	SCROLL <> SCROLL ⏪	PUSH BUTTON
<b>Menu 9</b> Set RS-485 Address (option -Q)			ADDRESS = 00    R	SCROLL <> SCROLL ⏪	PUSH BUTTON
<b>Menu 10</b> View PCB temperature (option -T)			TEMP = 35 DEG    R	SCROLL <>	PUSH BUTTON
<b>Menu 11</b> View SSPB current (option -V)			SSB DC = 1.86 A    R	SCROLL <>	PUSH BUTTON
<b>Save?</b> When "R" is selected from any above menu or at the end			SAVE SETTINGS?    Y N	SCROLL <>	PUSH BUTTON

**FIGURE 2.4 Menu Display and Sequences**

### **3.0 Optional Ethernet Interface Installation and Operation**

The following instructions apply to Cross Technologies' products equipped with a 10/100 Base-T compatible Ethernet interface for control and monitoring of its operating parameters. The two available options are as follows: **Option W8** includes an HTML script interface which allows the user to monitor and control product parameters using a standard web browser. **Option W18** includes an HTML script interface, as described above, and SNMP (Simple Network Management Protocol) control. Contact Cross Technologies for the SNMP MIB file.

### **3.1 Methods of Connection**

#### **3.1.1 Direct Connection to a PC**

For control from a local PC, attach the product's Ethernet port to the Ethernet network connector on the PC using a crossover RJ-45 cable.

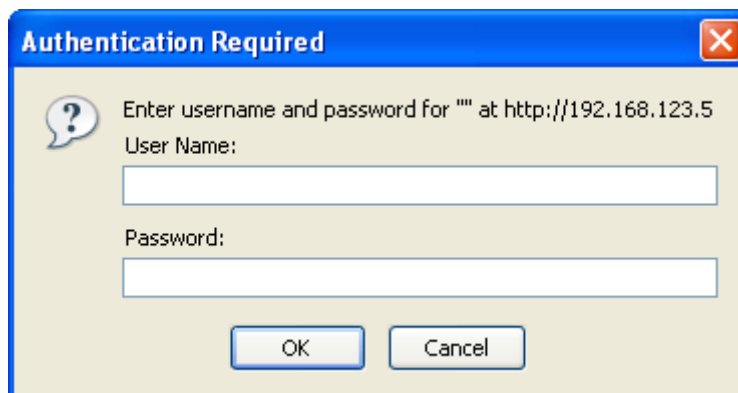
#### **3.1.2 LAN Connection**

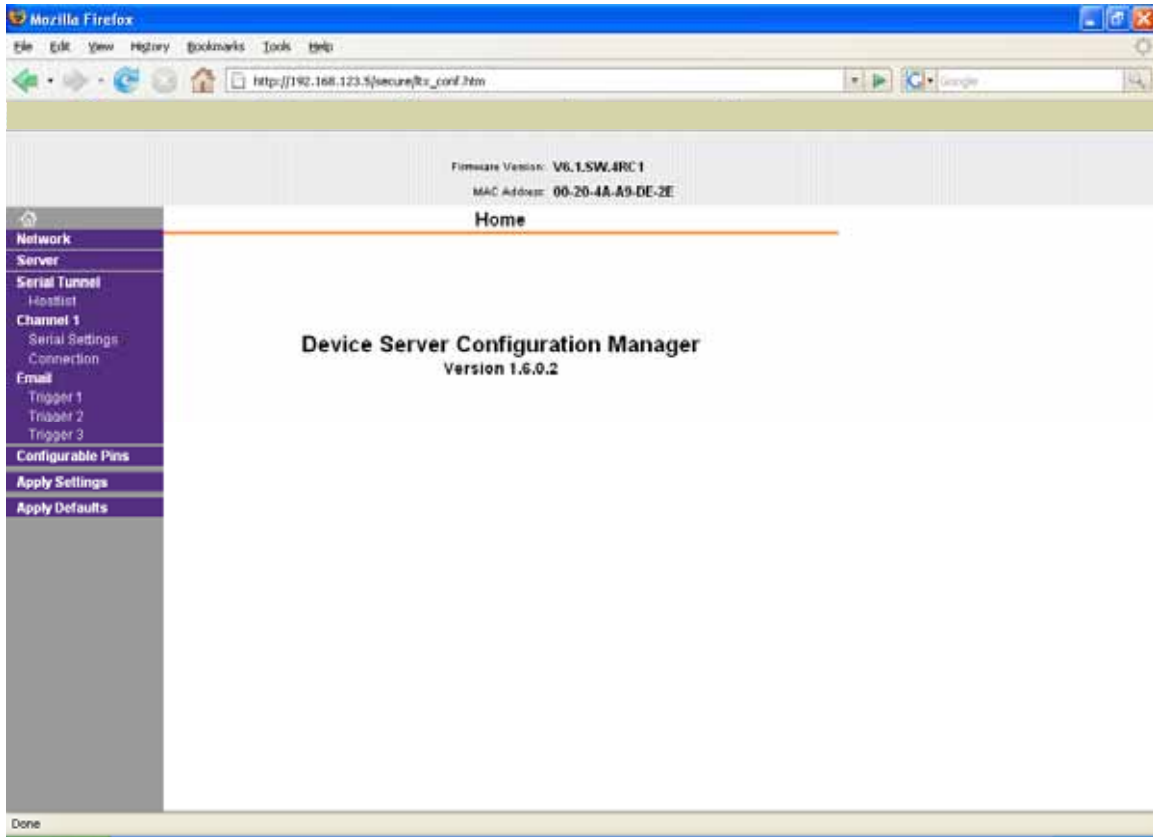
For LAN connections, attach the product's Ethernet port to the LAN using a normal RJ-45 cable. Use any PC on the LAN to connect to the product.

### **3.2 Ethernet Configuration**

Each product must be configured with an appropriate IP address, Netmask, and Gateway assigned by your network manager. The product is set at the factory with a static address that is written on a tag attached to the unit. The device server in the product has a built in HTTP based configuration manager that is used to configure network settings. To access the configuration manager open a web browser and enter the IP address of the product in the browser's address field. The window shown in Figure 1-A will appear. As delivered, there is no password set. Choose your user name and password here or leave those fields blank and click OK to proceed to the configuration manager web page.

**Figure 2.5: Password Screen**





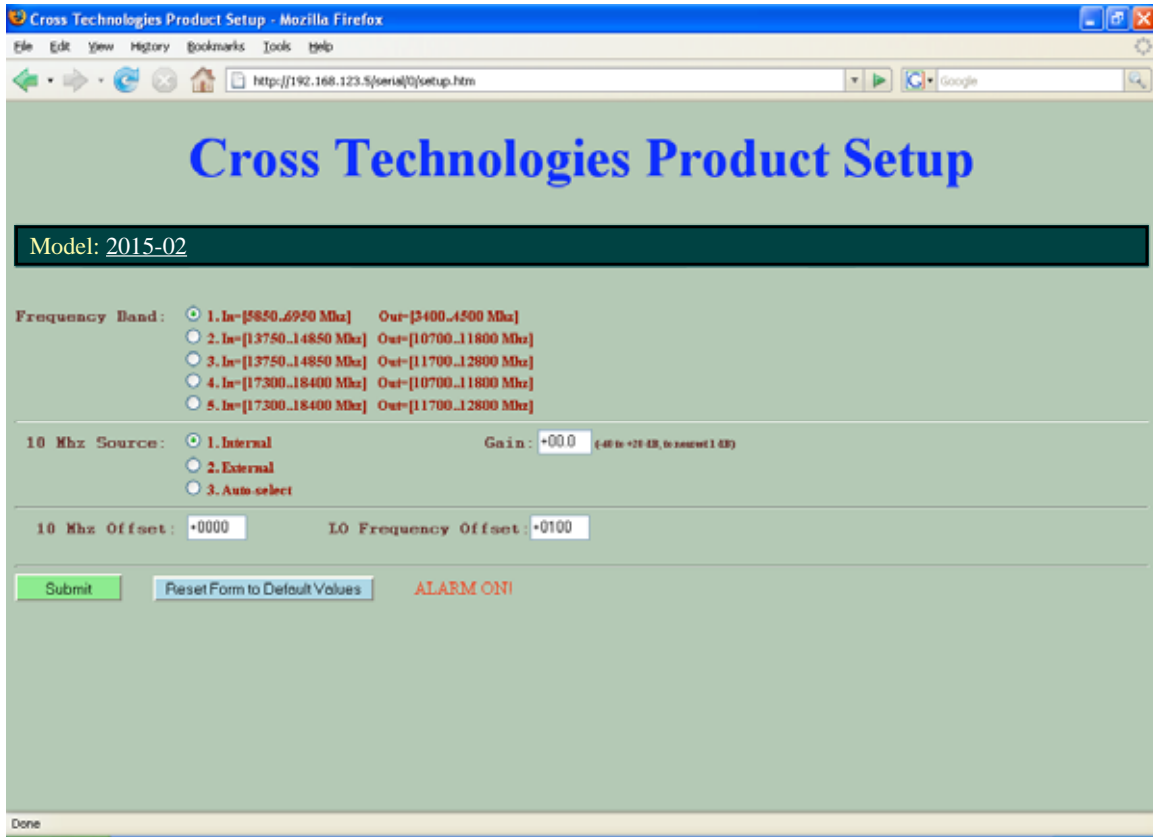
**Figure 2.6: Configuration Manager Screen**

In the left frame of the configuration manager click on Network to display the Network Settings screen. Enter the IP address, Subnet mask, and Gateway address with delimiter dots (example: 192.168.192.47). Click to apply settings in the left frame to apply the new settings in the network device.

### **3.3 Webpage M & C**

Enter the following address in a web browser to access the M & C webpage:

<http://<ip address of 2015-02>/serial/0/setup.htm> where <ip address> is the IP address of the unit. Figure 2.7 shows the webpage from a model 2015-02 frequency converter.



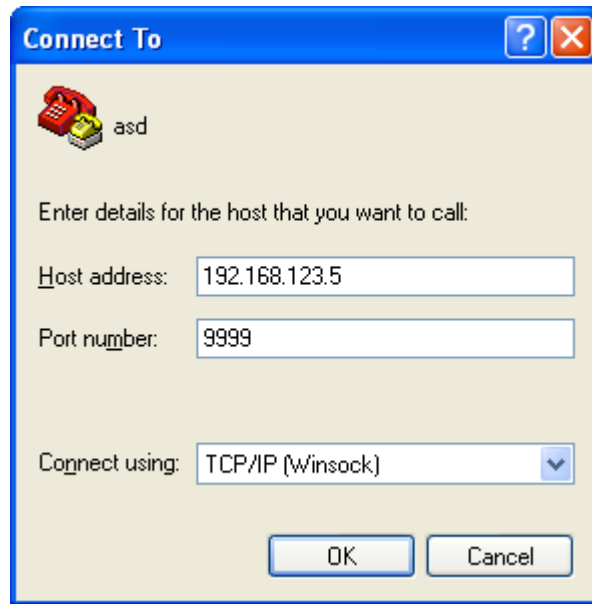
**Figure 2.7: Model 2015 Webpage**

### 3.4 SNMP Configuration (Option W18)

Setting of SNMP parameters such as Community Write and Community Read strings requires a *Telnet* connection to port 9999. The following instructions explain how to establish such a *Telnet* connection using Windows XP's Hyper Terminal utility .

Start the Hyper Terminal application and select “New Connection” from the “File” drop down menu. The next screen is a “Connect To” dialog box. Select TCP/IP (Winsock) from the “Connect using:” drop down menu.

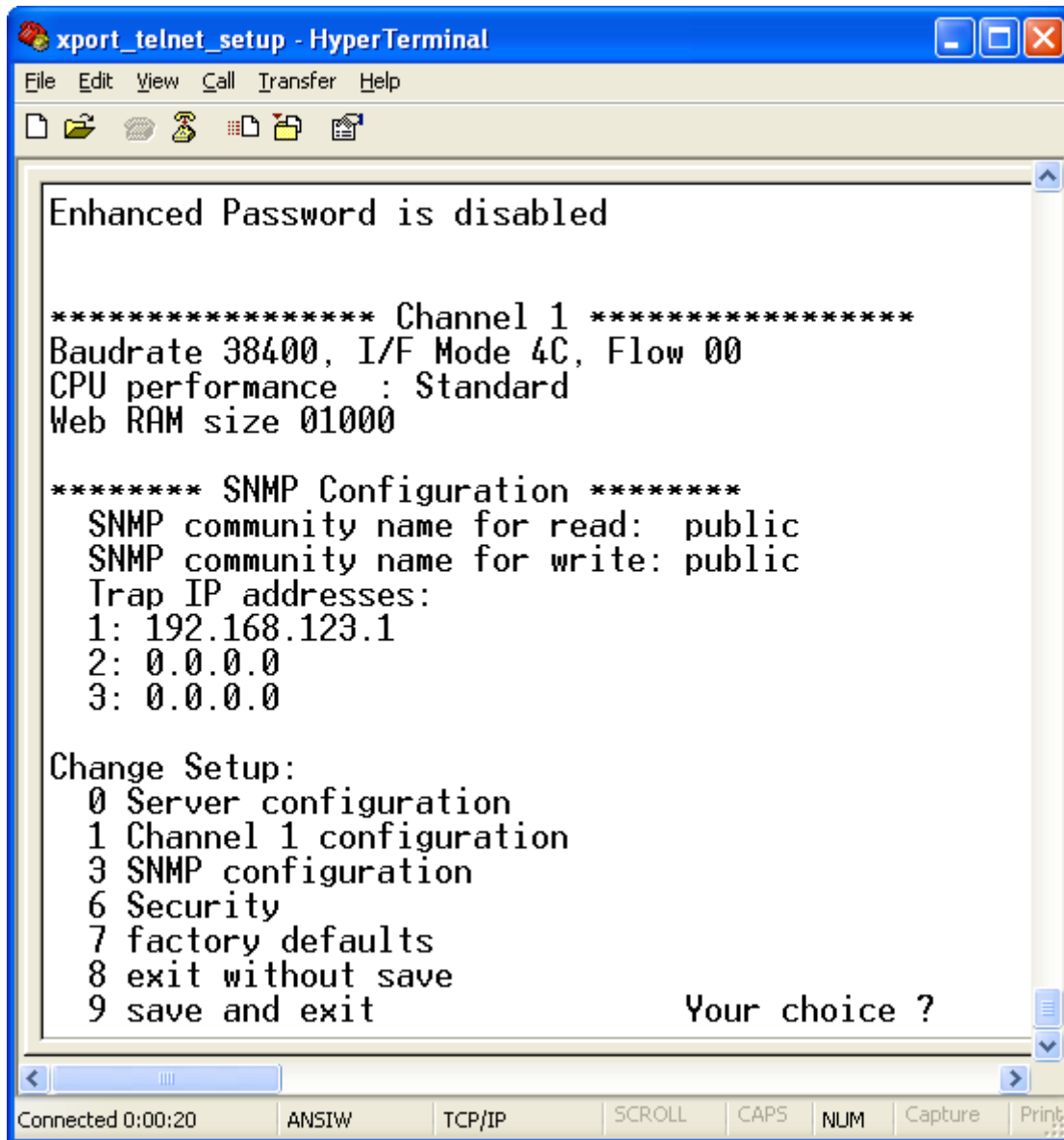
Enter the IP address of the 2015-02 in the “Host address:” field and 9999 in the “Port number:” field. Figure 2.8 shows an example of the Hyper Terminal settings required to access the SNMP configuration menu.



**Figure 2.8: Telnet Settings in Hyper Terminal**

Once the Telnet connection is established you will be prompted to “Press Enter for Setup Mode”. Press enter and a menu of device server configuration options will appear. Select menu item 3, “SNMP configuration”. You will be prompted to enter SNMP community read and write strings. After setting your desired community strings you will be prompted to “Enter IP addresses for SNMP traps:”. You must enter at least one and up to four IP addresses of SNMP managers that will access the unit. This is required even though SNMP traps are not implemented. The unit will not process SNMP SET and GET requests from an SNMP manager unless the IP address associated with that manager is entered in the device server.

**IMPORTANT: After “save and exit” is selected, the product’s power must be cycled off and on for the SNMP settings to load properly.**



**Figure 2.9: Device Server Configuration Menu**



6170 Shiloh Road  
Alpharetta, Georgia 30005

(770) 886-8005  
FAX (770) 886-7964  
Toll Free 888-900-5588

WEB [www.crosstechnologies.com](http://www.crosstechnologies.com)  
E-MAIL [info@crosstechnologies.com](mailto:info@crosstechnologies.com)

Printed in USA